

Remote RF monitoring and control system

The remote RF system is based on a National instruments cRIO system, this allows high MTBF and remote logging and control without the need for windows based PC's. The system is fully remote enabled via a GPRS modem (mobile phone technology) or broadband. The system has the capability of taking executive actions based on sensor inputs. The system, as well as RF sensors, can accept any 0-10V, 0-20mA, digital up to 250V, PWM, Counter Timer, USB, Ethernet, RS-232, CAN, RS-485 signals. Examples of executive actions are: -

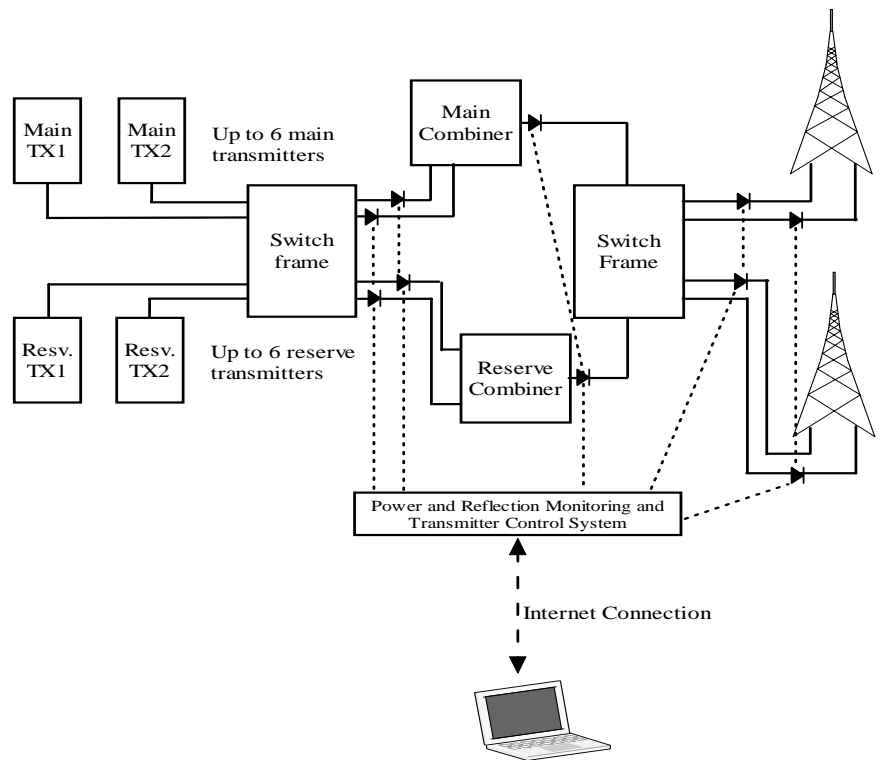
- Shutdown rig based on excess RF power or other signal stimulants
- Receive remote request to modify alarm conditions based on weather conditions.
- Predictive maintenance request due to sensors moving outside of give tolerance.



Measurably better value

Thurlby Thandar Instruments Ltd.
Glebe Road, Huntingdon, Cambridgeshire
PE29 7DR England (United Kingdom)
Tel: +44 (0)1480 412451
Fax: +44 (0)1480 450409
Email: info@tti-test.com
Web: www.tti-test.com

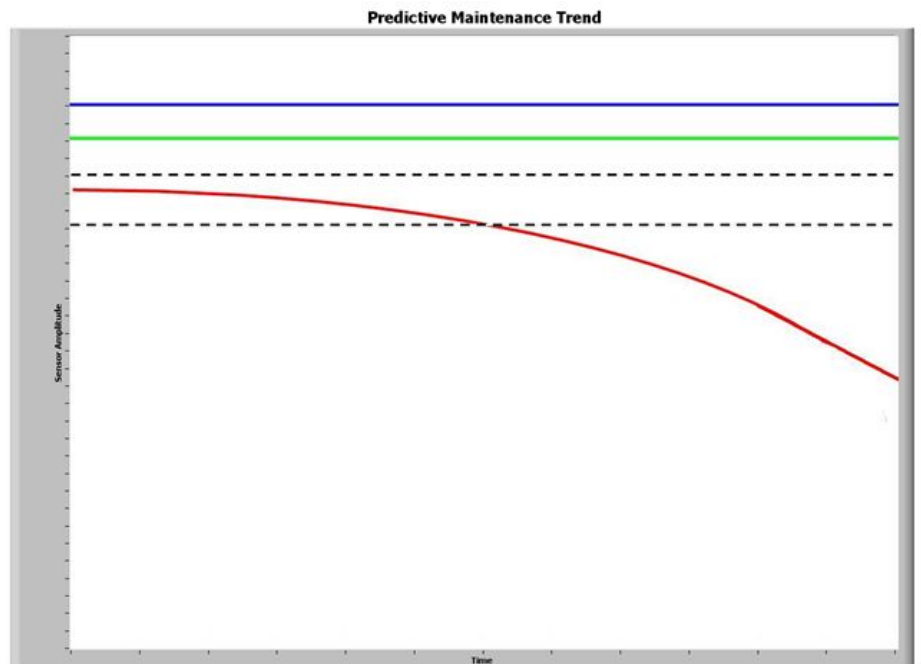
Typical Broadcast Site configuration.



► Represents two power sensors measuring forward and reverse power

Broadcast Site System Monitoring Points

An example of predictive maintenance trending can be seen below: -

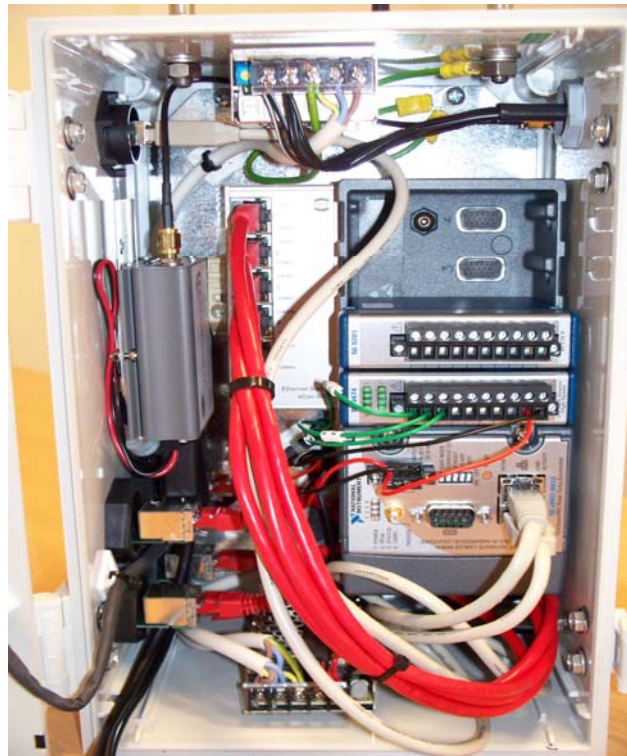
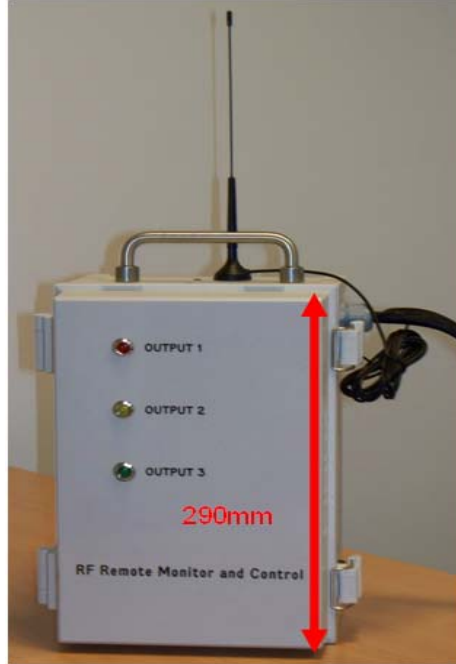


Measurably better value

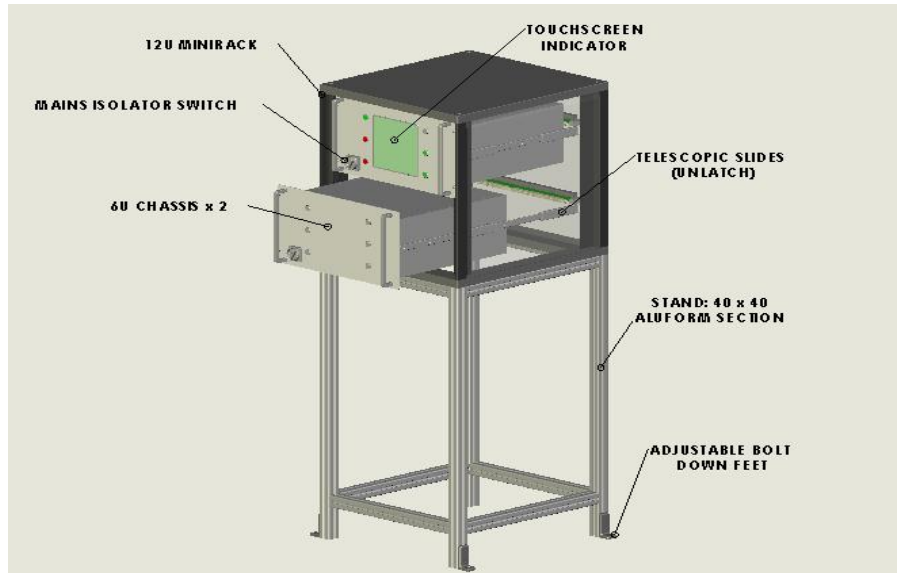
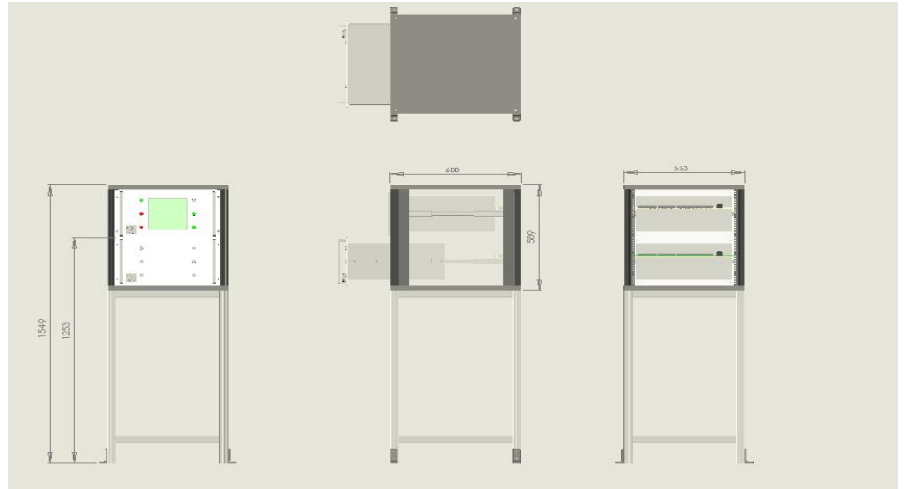
Thurlby Thandar Instruments Ltd.
Glebe Road, Huntingdon, Cambridgeshire
PE29 7DR England (United Kingdom)
Tel: +44 (0)1480 412451
Fax: +44 (0)1480 450409
Email: info@tti-test.com
Web: www.tti-test.com

The system can be configured to take large numbers of RF sensors and other signal stimulus. Below are examples of a small system (8 RF sensors max) and a large system (40 RF sensors plus)

Example of an 8 RF sensor system.



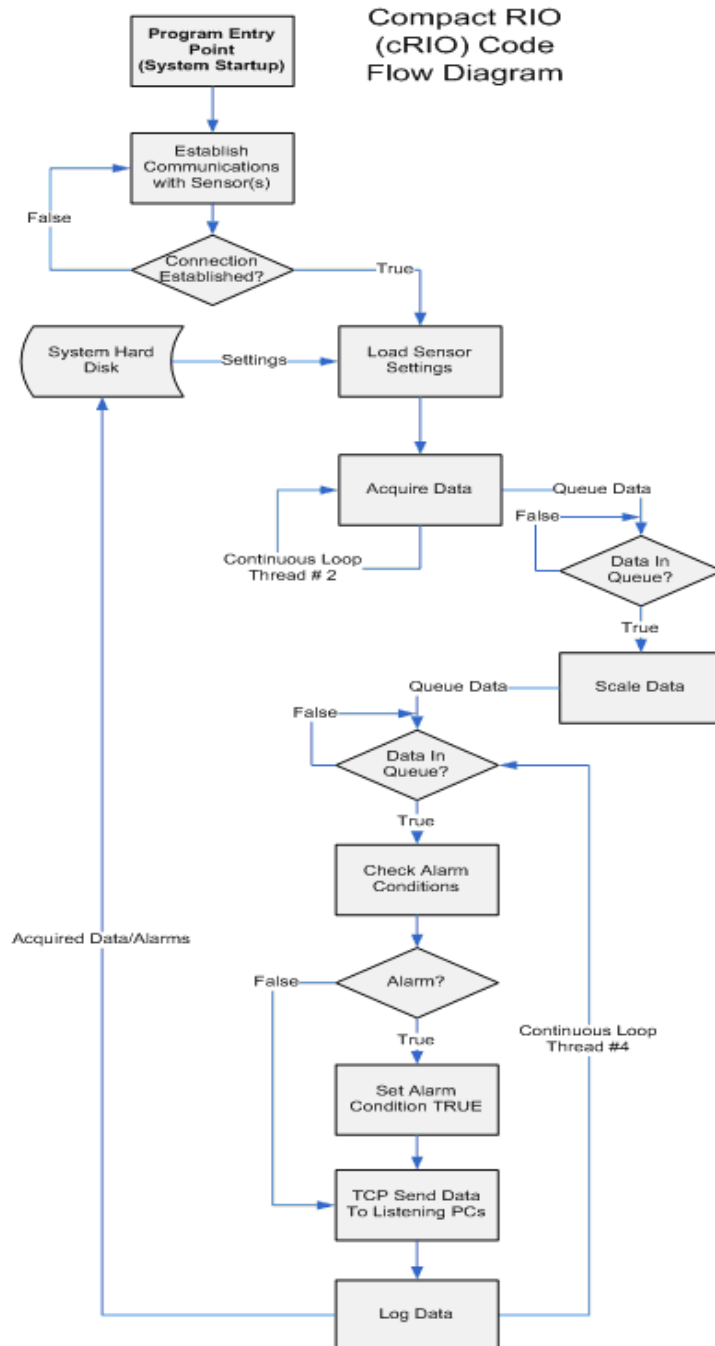
Example of a 40 RF sensor system.



Measurably better value

Thurlby Thandar Instruments Ltd.
Glebe Road, Huntingdon, Cambridgeshire
PE29 7DR England (United Kingdom)
Tel: +44 (0)1480 412451
Fax: +44 (0)1480 450409
Email: info@tti-test.com
Web: www.tti-test.com

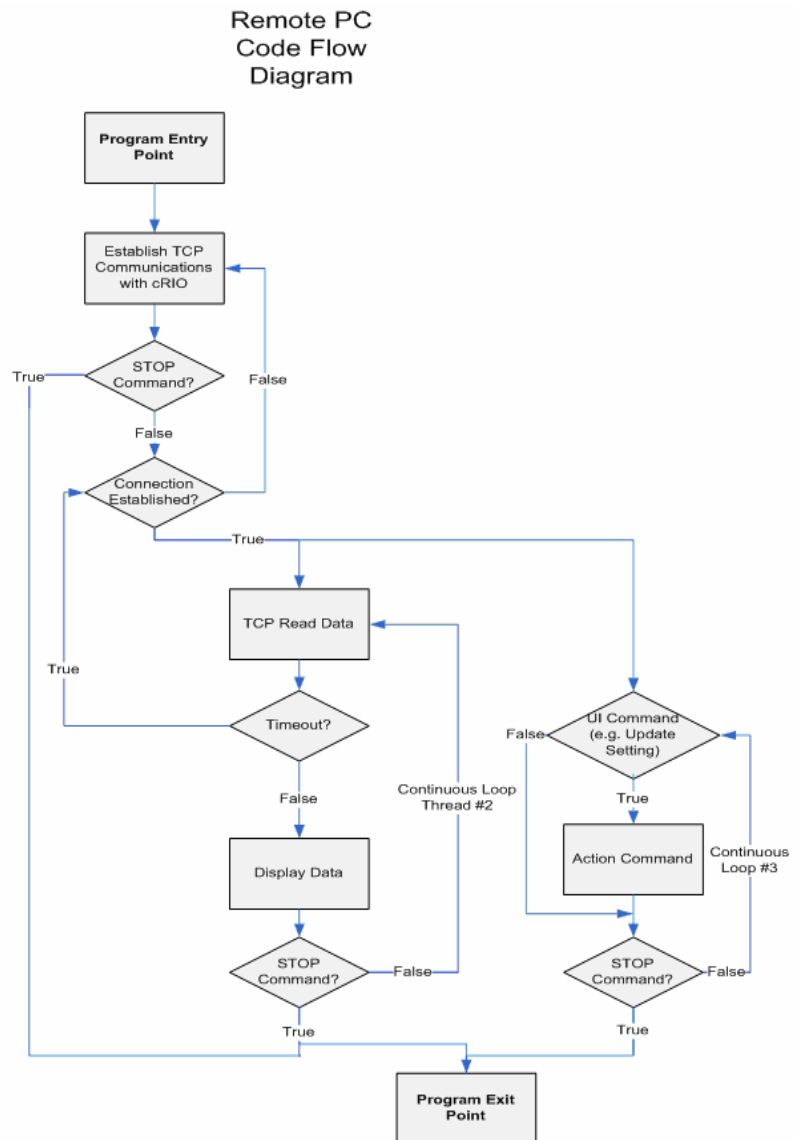
The program flow of the cRIO system can be seen below



Measurably better value

Thurlby Thandar Instruments Ltd.
Glebe Road, Huntingdon, Cambridgeshire
PE29 7DR England (United Kingdom)
Tel: +44 (0)1480 412451
Fax: +44 (0)1480 450409
Email: info@tti-test.com
Web: www.tti-test.com

The program flow of the remote PC can be seen below



Measurably better value

Thurlby Thandar Instruments Ltd.
Glebe Road, Huntingdon, Cambridgeshire
PE29 7DR England (United Kingdom)
Tel: +44 (0)1480 412451
Fax: +44 (0)1480 450409
Email: info@tti-test.com
Web: www.tti-test.com